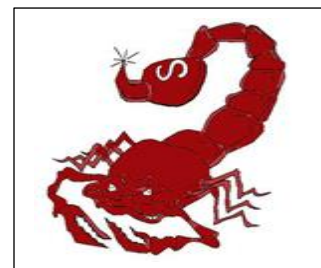


SATELLITE HIGH SCHOOL

2023-2024 School Profile



Vision Statement

Satellite High School students will graduate with the academic excellence and intellectual curiosity necessary for college success, career readiness, character development, responsible citizenship, and life-long learning.

Mission Statement

Satellite High School, a professional learning community, will create and maintain an academic and interdependent atmosphere through on-going self-reflection and personal improvement, teaming, measurable and attainable goal setting, student-centered learning, and collaboration among all stakeholders.

Administration	School Counseling Services
Robert "Bobby" Pruett , Principal Kelly Bombriant , Assistant Principal, Curriculum Dr. William Booth , Assistant Principal, Facilities Jay Sobke , Assistant Principal, Dean Taylor "TJ" Gaudy , Athletic Director	Jane Sargeant , Director of Guidance, class of 2027 Vanessa Matthews , Counselor, class of 2024 Holly Barton , Counselor, class of 2025 Donna Adams , Counselor, class of 2026 Greg Smith , College/Career Counselor Suzanne Hynes , ESE Counselor Ericka Gaudy , Testing Coordinator Diane Sandall , Registrar

300 Scorpion Court Satellite Beach, Florida 32937

(P) 321-779-2000 (F) 321-735-9736

Community and School

Satellite High School, located in Satellite Beach, sits on the east coast of central Florida. This beachside community consists of approximately 11,000 residents. The school serves Satellite Beach, Indian Harbour Beach, Patrick Space Force Base, the southern tip of Merritt Island, and the unincorporated area of South Patrick Shores. Satellite HS is one of the 17 comprehensive senior high schools in Brevard County. Nationally, Brevard Public Schools is the 66th largest district and recognized as a state and national leader in academic excellence. Brevard County is the tenth largest county in population in the state. Our community continues to grow due to Kennedy Space Center, Port Canaveral, Patrick Space Force Base, and numerous electronic and other high technology industries in the area.

Satellite High School (SHS) opened in the Fall of 1962 and graduated its first senior class in the Spring of 1963. Accredited by the Southern Association of Colleges and Schools, Satellite High School is one of the most outstanding high schools in Brevard County. SHS houses grades nine through twelve and has a population of 1,547, consisting of 380 freshmen, 402 sophomores, 411 juniors, and 321 seniors. The Free and Reduced lunch rate is 18.06%. The Distribution of the students by racial/ethnic group is as follows:

White	86%
Black	3%
Hispanic	6%
Asian	1%
Indian/Multicultural	5%

SHS Graduation rate is 99.4%
68% attend 4-year college/university
21% attend 2-year college/trade school

Accelerated Programs

College Board Advanced Placement (AP) & Capstone Diploma Courses available: US History, Biology, Calculus AB, Calculus BC, Capstone Research and Seminar, Computer Science Principles, English Language and Literature, Environmental Science, Government, Human Geography, Music Theory, Physics 1&2, Psychology, Spanish, Statistics, Studio Art, Art 2D, Art 3D, and World History.

Dual Enrollment

Students in grades 10-12, take courses through Eastern Florida State College to earn high school and college credits.

Collegiate High School

Students commit to graduate high school with an Associate in Arts degree from Eastern Florida State College. In 2022 20 students graduated with their AA degree.

Satellite High School Academy of Fine Arts

An honors academy for students concentrating in theatre, visual arts, vocal music, instrumental music, digital media, technical design, and programming.

Career Technical Programs: Automotive, digital media, technical design, early childhood education, programming,

Science Research: for students pursuing a STEM career, SHS research program houses a state of the art Bio Safety Level 2 lab. SHS students achieved state, national and global recognition.

Diploma Designations

Scholar Diploma Designation

In addition to meeting the Standard High School diploma requirements:

- ~ Pass Geometry EOC
- ~ Earn one (1) credit in Algebra 2 or an equally rigorous mathematics course.
- ~ Earn one (1) credit in Statistics or an equally rigorous mathematics course
- ~ Pass the Biology 1 EOC
- ~ Earn one (1) credit in Chemistry or Physics
- ~ Earn one (1) credit in a course equally rigorous to Chemistry or Physics
- ~ Pass the U.S. History EOC
- ~ Earn two (2) credits in the same World Language
- ~ Earn at least one (1) credit in AP, IB, AICE, or a dual enrollment course.

A student is exempt from taking the biology 1 or U.S. History EOC if they enroll in an AP, IB, or AICE Biology or U.S. History course and earn the minimum score to earn college credit on the respective assessment. In 2023 49 students earned the Scholar Designation.

Merit Diploma Designation

In addition to meeting the Standard High School diploma requirements:

- ~ Attain one (1) or more industry certifications from the listed established (per s. 1003.492, F.S.).

In 2023, 111 students graduated with a Merit Diplomas Designation.

AP Capstone Diploma Designation

Students who earn a 3 or higher on four AP exams and the two (2) Capstone exams, receive the AP Capstone Diploma. In 2023, 24 students graduated with an AP Capstone Diploma.

Florida Seal of Biliteracy Diploma Designation

The Florida Seal of Biliteracy Program recognizes high school graduates who has earned a standard high school diploma and four (4) world language credits in the same world language with a cumulative 3.0 GPA or higher OR achieved a qualifying score on a world language assessment.

The median ACT Scores

Satellite High School	State	Nation
23.2	19	20.9

The median SAT Scores

	Satellite High	State	Nation
Composite	1103.83	983	1105
Math	543	473	547
Reading/Writing	561	510	560

Grading Scale	Grade Point Average	Weighted Courses	
		Honors	AP/Dual Enrollment
A 90-100	A 4	A 4.5	5
B 80-89	B 3	B 3.5	4
C 70-79	C 2	C 2.5	3
D 60-69	D 1	D 1.5	1
F 0-59	F 0	F 0	0

***All courses and students are ranked on an un-weighted 4.0 scale. Honors and accelerated courses are ranked on 5.0 scale.**